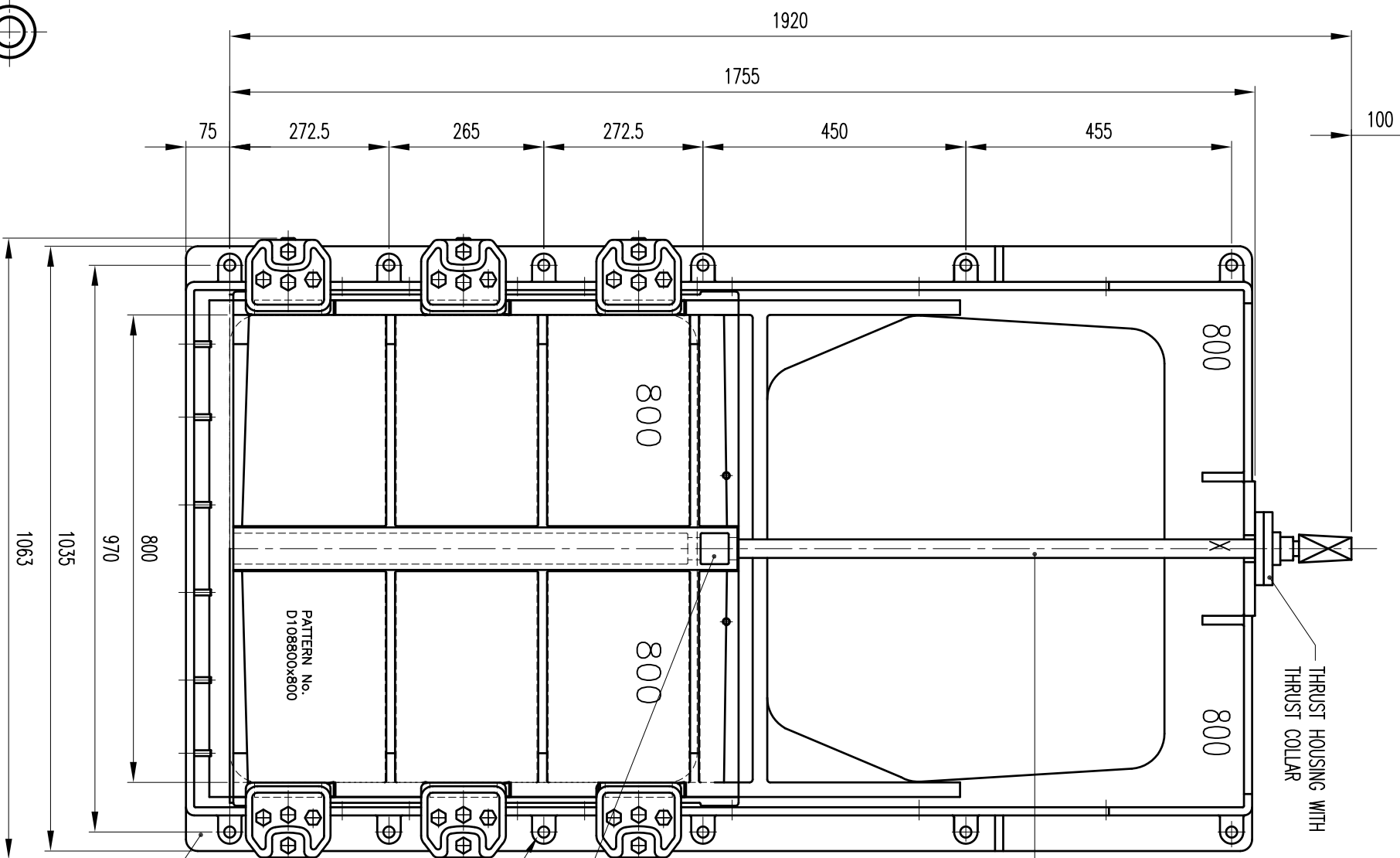


Copyright
 This drawing is protected by copyright & must not be reproduced in any form, including manufacture of the product shown therein, without the prior written consent of the copyright owners.
 INDUSTRIAL PENSTOCKS LTD

DO NOT SCALE – IF IN DOUBT ASK



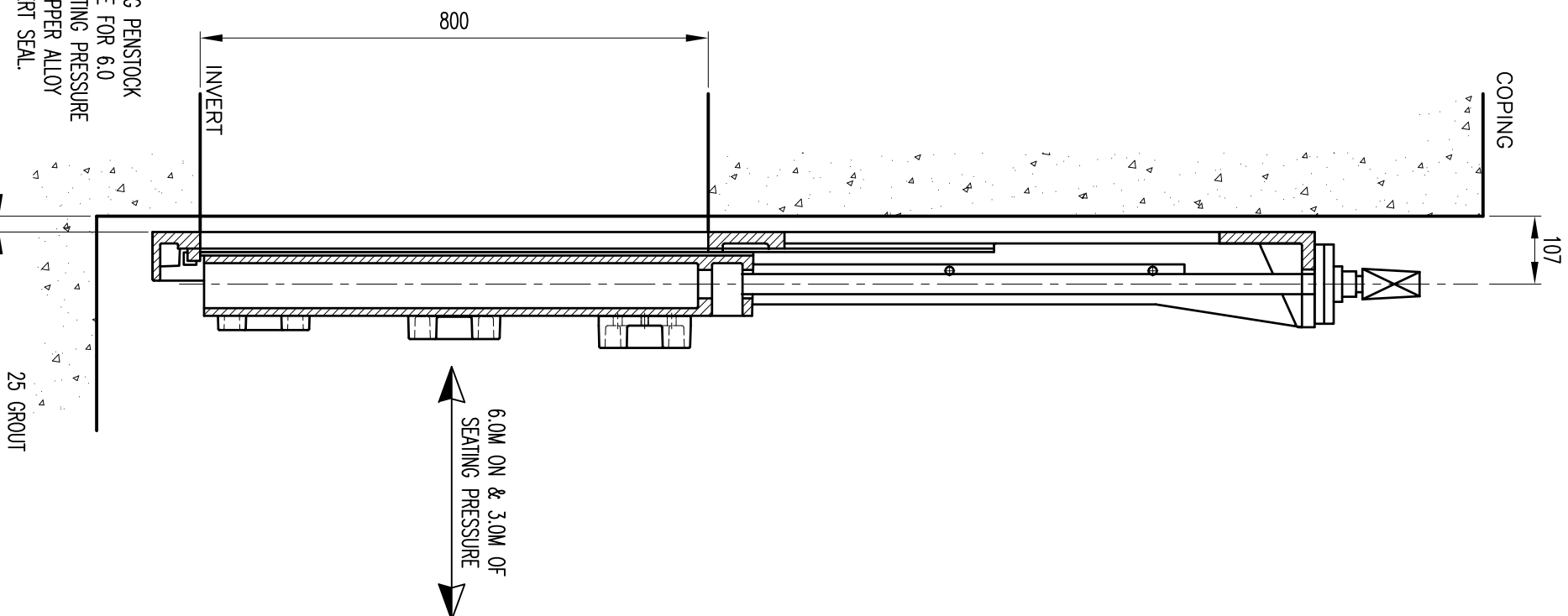
THRUST HOUSING WITH THRUST COLLAR

STAINLESS STEEL GRADE 304 NON-RISING SPINDLE.

GUN METAL DOOR NUT.

12No. HOLES DRILL $\phi 15 \times 90$ mm DEEP TO SUIT LIEBIG B15/70 316 ST. ST. FIXING BOLTS.

800 SQ. FIG 108 C.I WALL MOUNTING PENSTOCK CONFORMING TO BS7775 & SUITABLE FOR 6.0 METRES ON & 3.0 METRES OFF SEATING PRESSURE CAST IRON FRAME & DOOR WITH COPPER ALLOY SEALING FACES & EPDM FLUSH INVERT SEAL.



COPING

107

6.0M ON & 3.0M OF SEATING PRESSURE

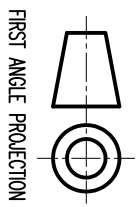
INVERT

25 GROUT

GENERAL NOTES:

- TOLERANCES UNLESS STATED OTHERWISE:
 LINEAR DIMENSIONS <1000mm= ± 0.25 mm
 LINEAR DIMENSIONS >1000mm= ± 1.00 mm
 ANGULAR DIMENSIONS= $\pm 0.5^\circ$
 CONCENTRICITY= 0.10mm
 HOLE POSITION= 0.25mm
 PERPENDICULARITY= 0.10mm
 FLATNESS= 0.10mm
- REMOVE ALL BURRS & SHARP EDGES
- MACHINE SURFACES $\nabla_{0.8}$ UNLESS NOTED OTHERWISE.

Part/Drawing Number: 800-NR-CAP DIRECT		Revision	
Approved by AS	Checked by MAR'06	Contract No	Computer File No
Industrial PENSTOCKS Ltd Penstocks Valves Fittings and Installation for fluid control Unit 142 Washington Industrial Estate, Washington Street Northerton, Dudley, DY2 9PH Tel: 01384 484111 Fax: 01384 248950			
Client CAST IRON			
Title GENERAL ARRANGEMENT 800 SQ. CAST IRON WALL MOUNTING PENSTOCK. TEE KEY OPERATED.			
Rev	Date	Description	By
Amendments			
Material CAST IRON			



FIRST ANGLE PROJECTION