

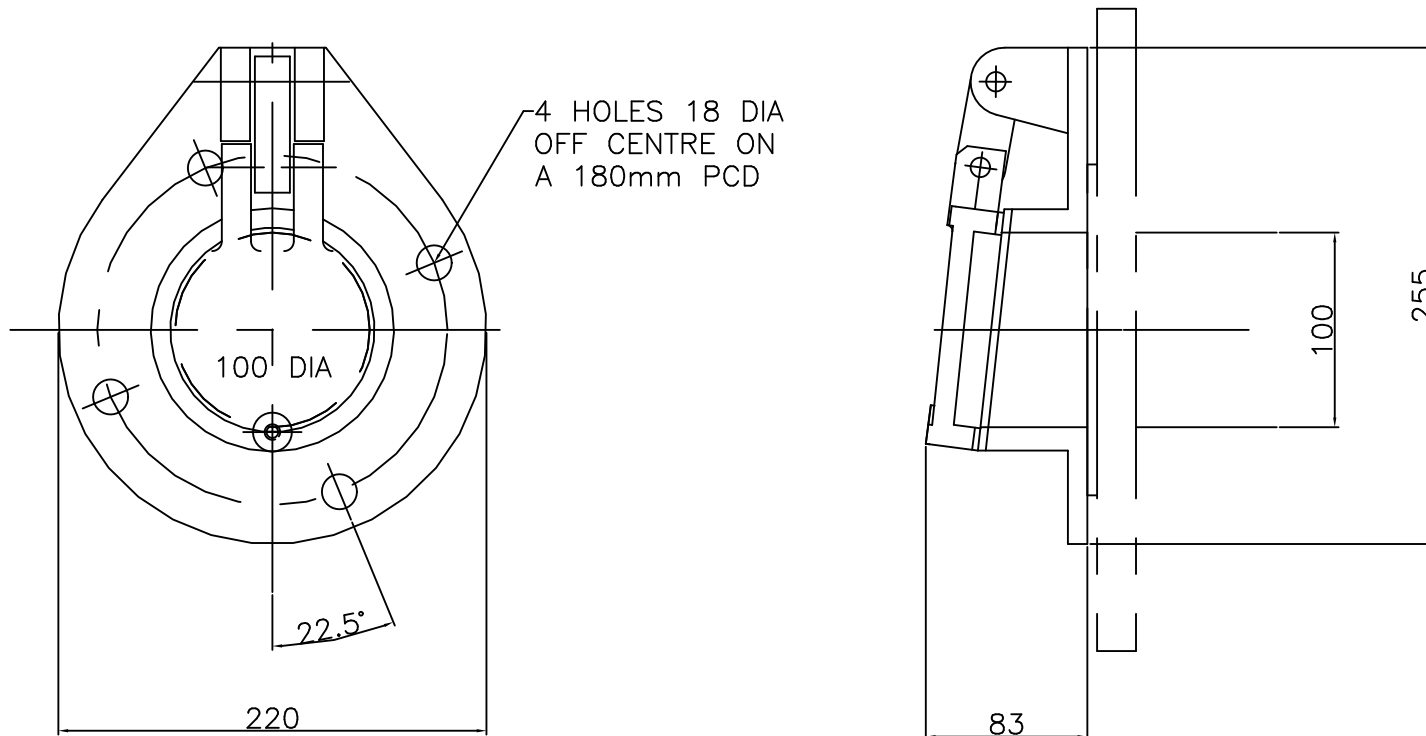
**COPYRIGHT**  
 This drawing is protected by copyright and must not be reproduced in any form, including manufacture of the product shown therein, without the prior written consent of the copyright owners.  
**INDUSTRIAL PENSTOCKS LIMITED**

DO NOT SCALE – IF IN DOUBT, ASK.

CUSTOMER :  
 SCHEME :  
 ITEM REFERENCE :  
 LOCATION :  
 QUANTITY :

**MATERIAL SPECIFICATION**

FRAME & DOOR – DUCTILE IRON  
 SEALING FACES. – PHOSPHOR BRONZE  
 HINGE PINS. – STAINLESS STEEL  
 HINGE LINKS. – PHOSPHOR BRONZE  
 COATING – BLACK EPOXY 150 MICRONS  
 NOMINAL



REVISION				REVISION				REVISION			
No	WAS	DATE	SIGN	No	WAS	DATE	SIGN	No	WAS	DATE	SIGN
/	/	/	/	/	/	/	/	/	/	/	/
/	/	/	/	/	/	/	/	/	/	/	/
/	/	/	/	/	/	/	/	/	/	/	/
/	/	/	/	/	/	/	/	/	/	/	/
/	/	/	/	/	/	/	/	/	/	/	/

100 DIA BORE  
 CAST IRON  
 WALL / PIPE MOUNTED  
 FLAP VALVE

DRAWN	<b>INDUSTRIAL PENSTOCKS LTD.</b>	
A.J.S.	PENSTOCKS AND VALVES FOR THE WATER INDUSTRY	
DATE	UNITS 1 AND 2, WASHINGTON INDUSTRIAL ESTATE, WASHINGTON STREET, NETHERTON, DUDLEY. DY2 9PH	
11-05-06	TEL : 01284 498 411 FAX : 01284 246 950	
SCALE	PART No.	
NTS	DRAWING NUMBER	REV. 0
MATERIAL	100-GA	
AS QUOTED	FIRST USED ON ORDER REF.	